



CEILING PLATE SERIES

- . Surface mount plates, allowing you to create 3 and 5 Light Cascading fittings, or 7 and 13 Light Clusters
- . Available in 3 holes, 5 holes, 7 holes & 13 holes
- . Finishes: Polish Chrome (3, 5, 7 holes)
- . Satin Chrome (13 holes)
- . Black (7 holes)
- . White

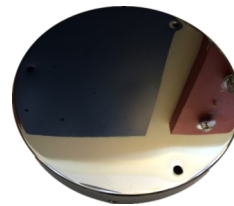
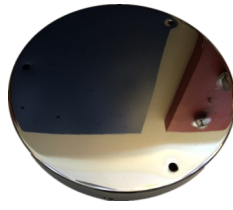
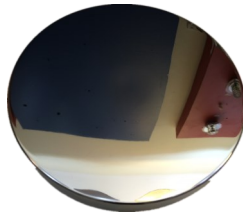
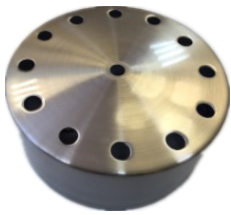


UPATE150-BLK

UPATE150-7-BLK

UPATE320-BLK

UPATE150-7-CH



UPATE150-13-MCH

UPATE320-CH

UPATE320-3-CH

UPATE320-5-CH

UPATE500-WH

TECHNICAL SPECIFICATIONS

Model No.	Description	Finish	Dimension (mm)
UPATE150-BLK	conversion plate without holes, holes can be made as request	Black	Ø150 x H57mm
UPATE150-7-BLK	7 hole conversion plate	Black	Ø150 x H57mm
UPATE320-BLK	conversion plate without holes, holes can be made as request	Black	Ø320 x H40mm
UPATE150-7-CH	7 hole conversion plate	Polish Chrome	Ø150 x H57mm
UPATE150-13-MCH	13 hole conversion plate	Satin Chrome	Ø150 x H60mm
UPATE320-CH	conversion plate without holes, holes can be made as request	Polish Chrome	Ø320 x H40mm
UPATE320-3-CH	3 hole conversion plate	Polish Chrome	Ø320 x H40mm
UPATE320-5-CH	5 hole conversion plate	Polish Chrome	Ø320 x H40mm
UPATE500-WH	conversion plate without holes, holes can be made as request	White	Ø500 x H40mm