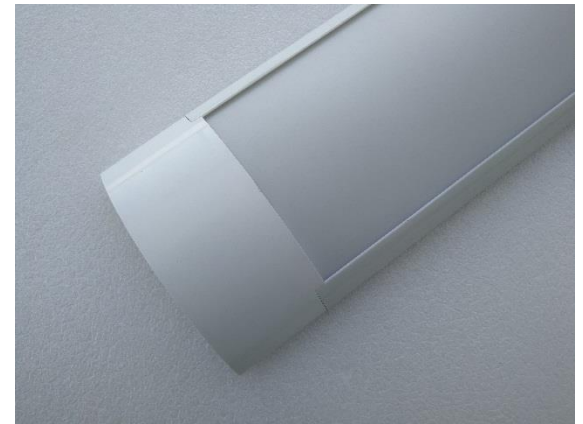




STYLED 3CCT SLIMLINE BATTEN

DESCRIPTION

UGE Lighting have combined its state of the art LED technology with elegant housing to create this STYLED SLIMLINE BATTEN. This linear LED batten series is stylish, extremely reliable and easy to install. With high uniformity of light, the STYLED SLIMLINE LED BATTEN is a very convenient linear light source available in 600mm and 1200mm lengths. With long lifetime coupled with high performance and optimized plastic diffuser for uniform illumination, the STYLED SLIMLINE LED BATTEN delivers low glare and superior performance at a reasonable price.



FEATURES

- Elegant slimline design
- High uniform illumination
- Low-glare light distribution
- Color Selectable (3000K/4000K/5000K)
- Easy installation Hardwire from center
- Phase cut dimmable
- Warranty for 3 years
- Up to 80% energy saving

FINISHING

- High grade Aluminum body
- High transmissive Polycarbonate cover

APPLICATION

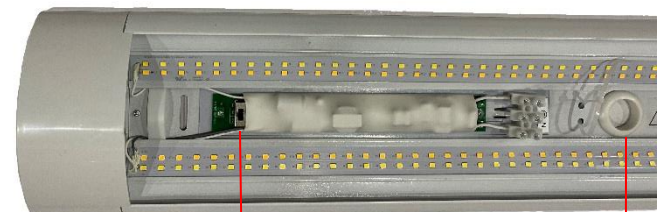
General commercial area lighting, shelf lighting, cove lighting

SPECIFICATION

- Input voltage: 230 - 250V 50Hz
- Wattage: 18W and 36W
- Lumen 2FT: 1500lm (3000K), 1700lm (4000K), 1600lm (5000K)
- Lumen 4FT: 3000lm (3000K), 3400lm (4000K), 3200lm (5000K)
- CRI: 80
- Beam Angle: 110°
- IP Rating: IP20
- Finish: White

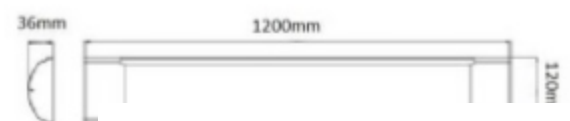
Model No.

- USTYLED18-3CCT-DIM (18W)
- USTYLED36-3CCT- DIM (36W)



Inbuilt 3CCT dip Switch

Centre Hole in Mounting Plate



Select from 3 colour options

