

# THINNER PROFILE

## 10W Integrated Multi Downlight

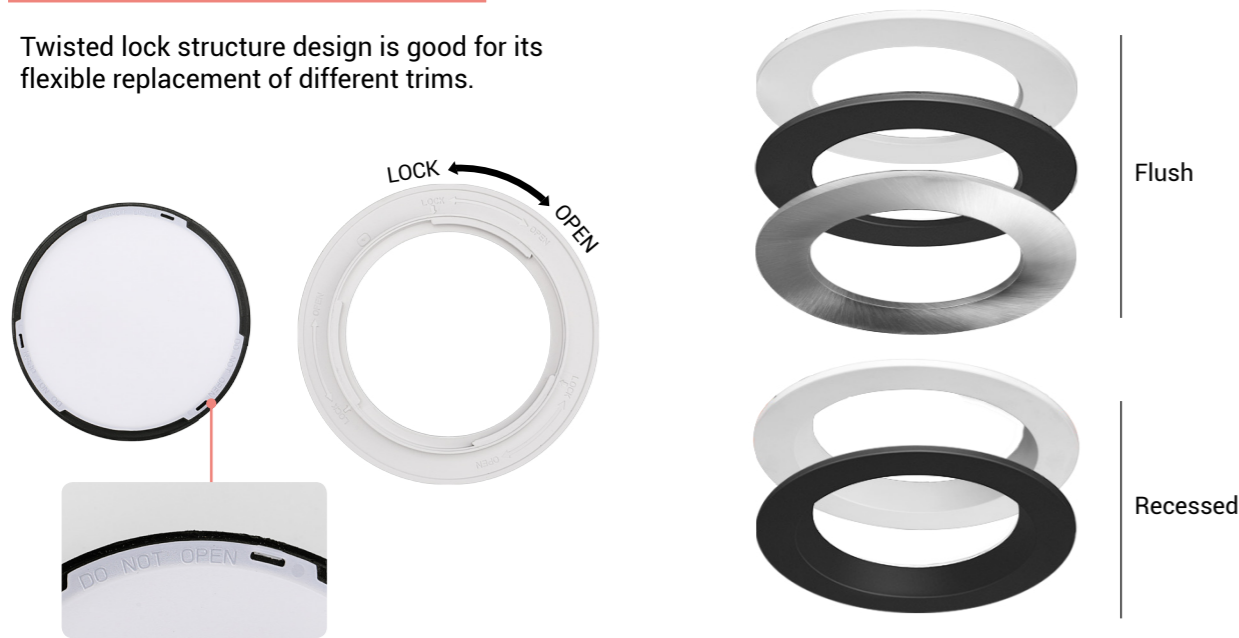
It's a trim-changeable design which you can have more color and shape options.

-  DIMMABLE
-  120° BEAM
-  40k HRS LIFE
-  IP54 WATERPROOF



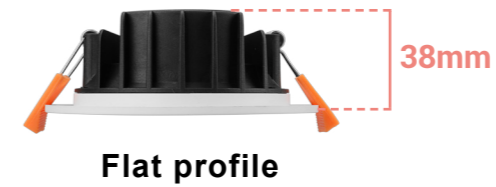
### Operation-Friendly Design

Twisted lock structure design is good for its flexible replacement of different trims.

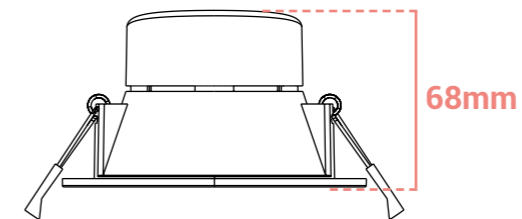


Define Thinner Profile with No Doubt.

**Saturn**  
(New)



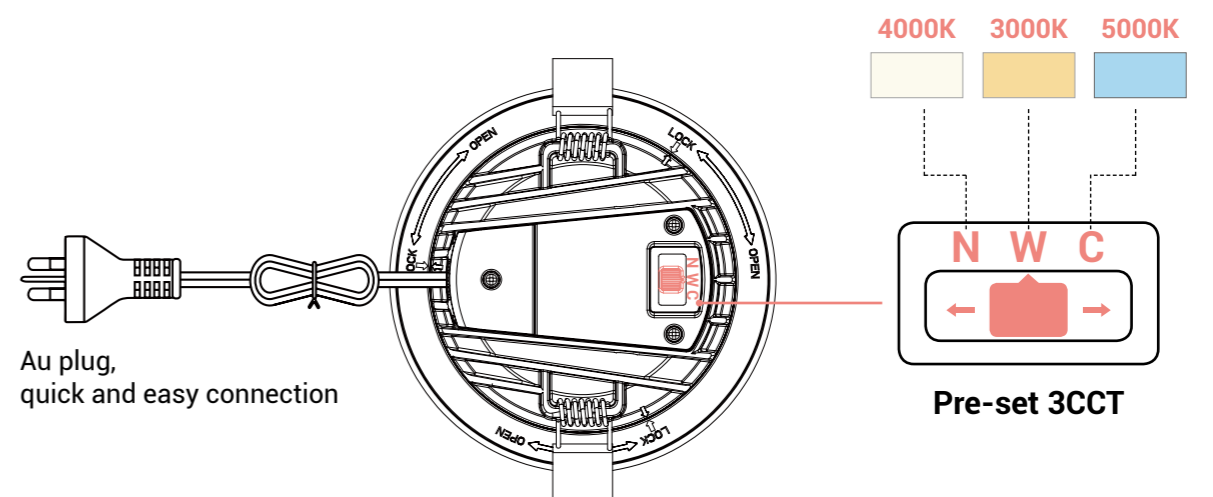
**Old**



**IC-4**

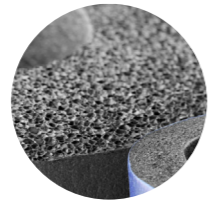
### Multi-Color Setting

Pre-set button on the back of the lamp, you can choose 3000k, 4000k or 5000k as you preferred.



# Performance is Guaranteed

The thermal conductive heat sink and PC trim effectively ensure ideal heat dissipation effect. Its combination achieves material stability and also keep its elegant color aesthetics.



Thermal conductive nylon

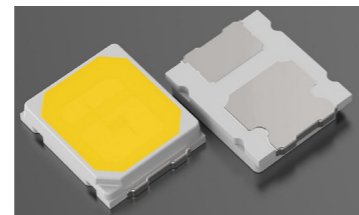


PC



R9>15

The Secret of the LEDs, Large LED chip, high-temperature resistant led bracket, 2835 LED with gold wire welding, with good temperature resistance and long service life, R9>15, providing more comfortable and vivid lighting color.



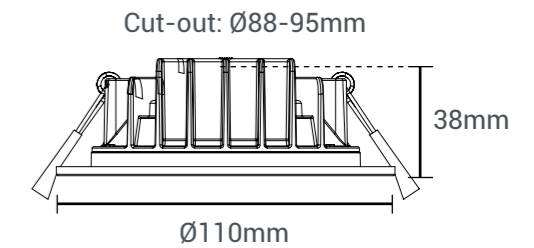
The power supply adopts imported electronic materials. It's digital phase-cut dimmable design can be compatible with most of conventional triac dimmers. It can automatically identify the type of dimmer and has good dimming smoothness. The power supply is designed with a protective circuit, which will stabilize the power and performance of the lamp during voltage fluctuation.



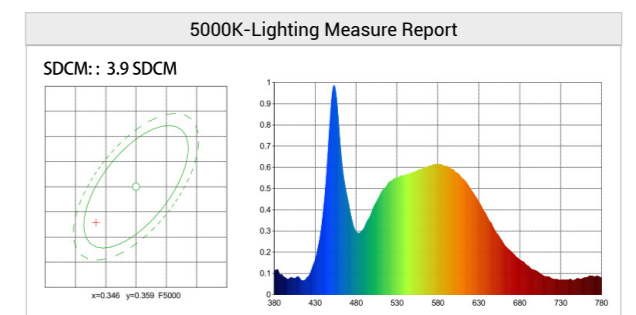
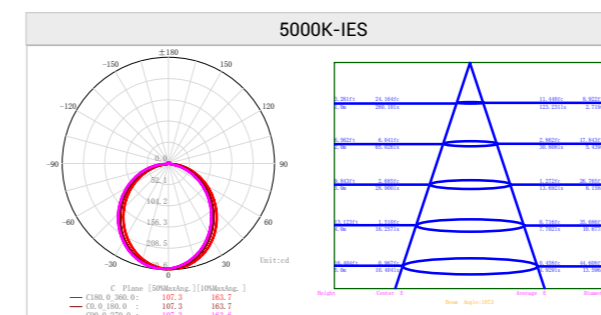
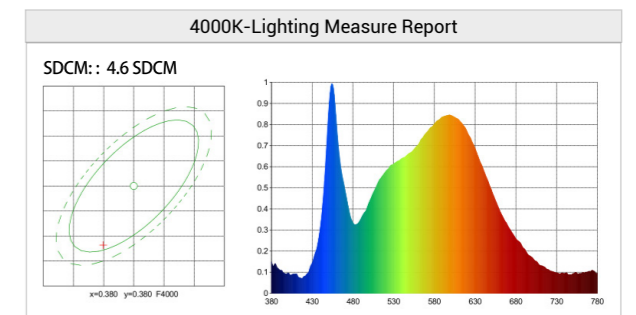
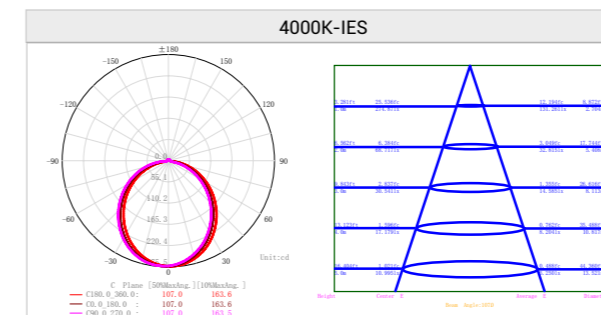
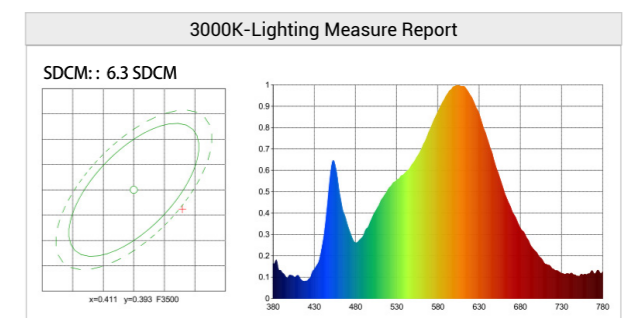
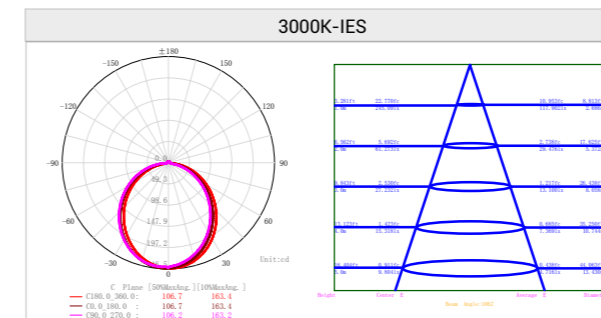
# Data Sheet

## USATURN10F-3CCT

Power	10W		
Input Voltage	AC200-240V 50Hz		
CCT	3000K	4000K	5000K
Lumen output	770lm	850lm	830lm
Efficacy	77lm/w	85lm/w	83lm/w
CRI	>80		
Rated Input Current	0.04A		
PF value	>0.9		
IP Rated	IP54		
Dimmable	Yes		
Beam Angle	120°		
Lifespan	>40,000Hrs		
Warranty	5 years for residential applications 3 years for commercial applications		



Flat profile

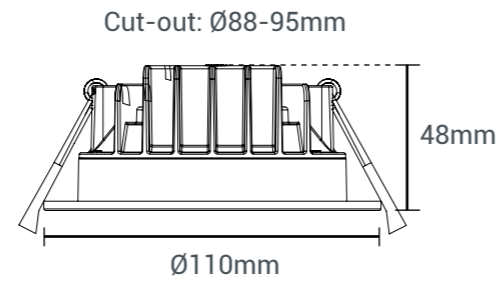




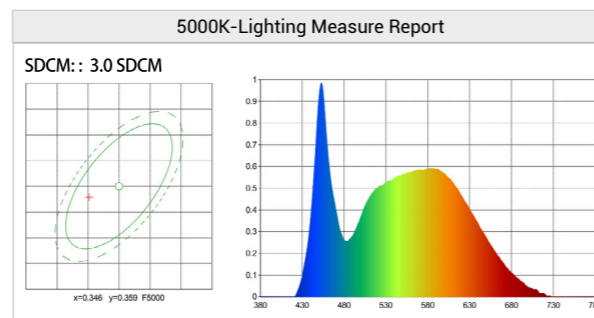
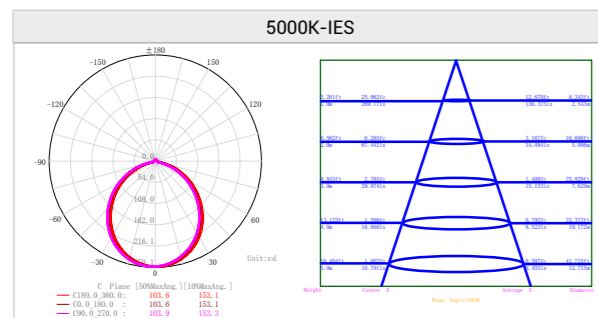
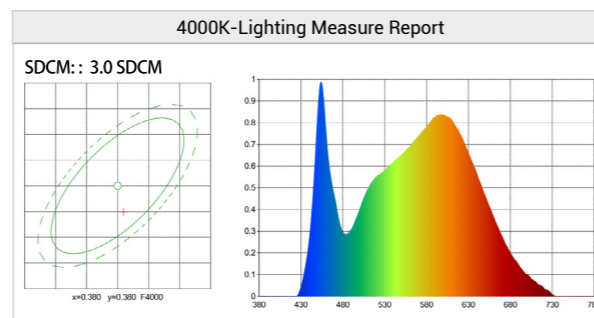
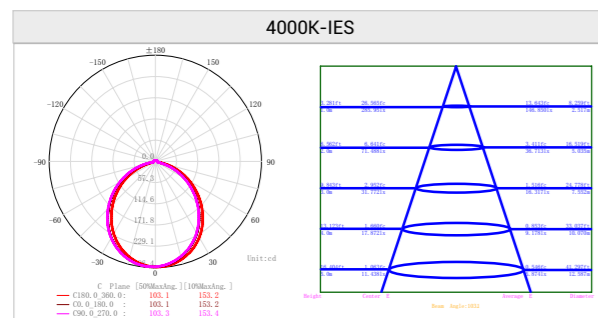
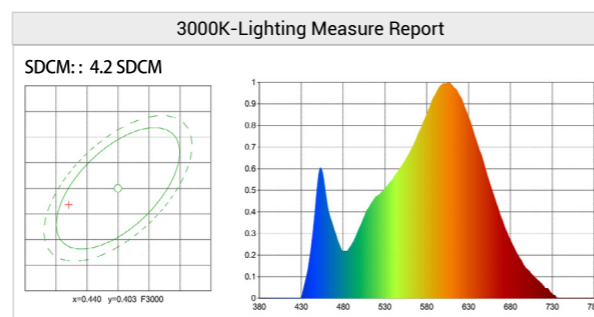
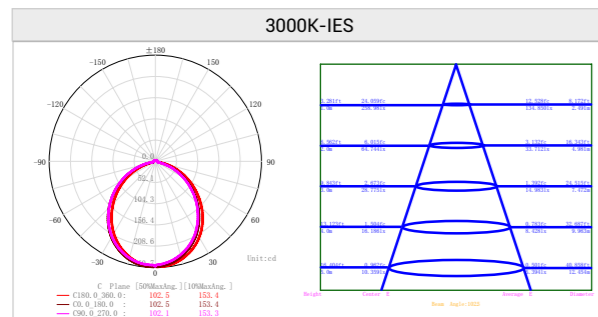
# Data Sheet

## USATURN10-3CCT

Power	10W		
Input Voltage	AC200-240V 50Hz		
CCT	3000K	4000K	5000K
Lumen output	770lm	850lm	830lm
Efficacy	77lm/w	85lm/w	83lm/w
CRI	>80		
Rated Input Current	0.04A		
PF value	>0.9		
IP Rated	IP54		
Dimmable	Yes		
Beam Angle	120°		
Lifespan	>40,000Hrs		
Warranty	5 years for residential applications 3 years for commercial applications		



**Recessed profile**



**LIGHTING THAT OUTPERFORMS**  
SINCE 1998